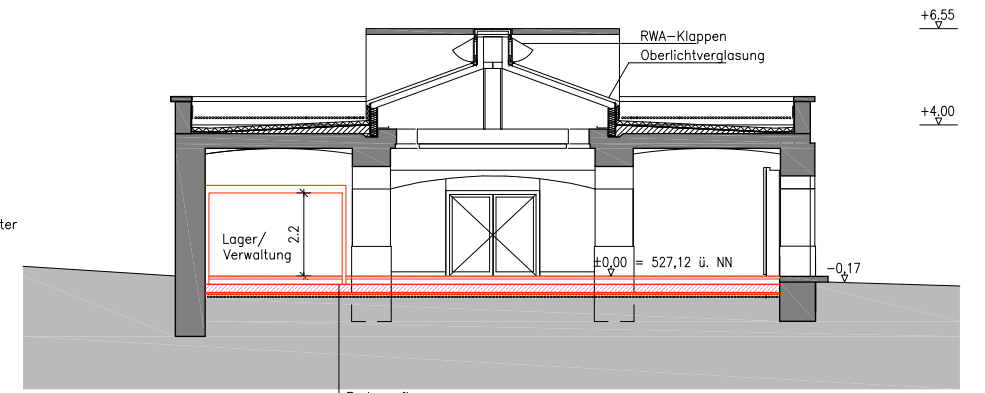


Schnitt A-A

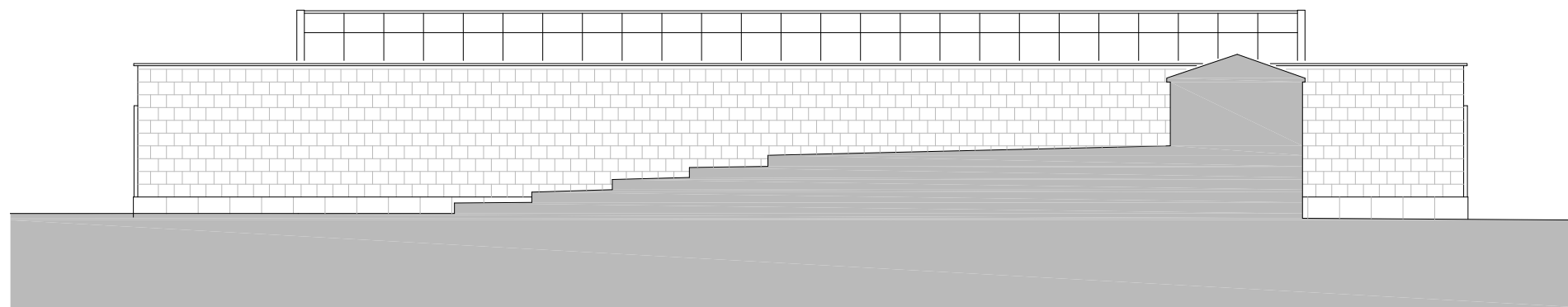


Schnitt B-B

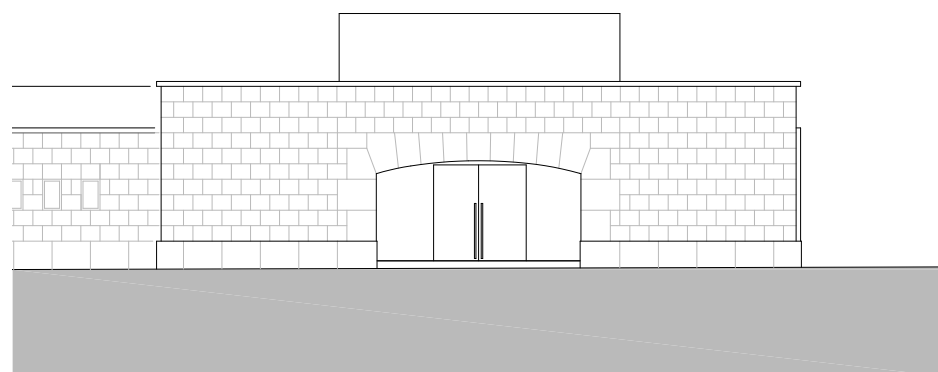
Bodenaufbau:
 Industrieparkett Eiche 20 mm
 Heizestrich 75 mm
 Trennlage
 Trittschalldämmung 20 mm
 XPS-Dämmung 120 mm
 Stahlbetonbodenplatte 200 mm
 Sauerberkeitschicht 50 mm
 Kapillarbrechende Schicht



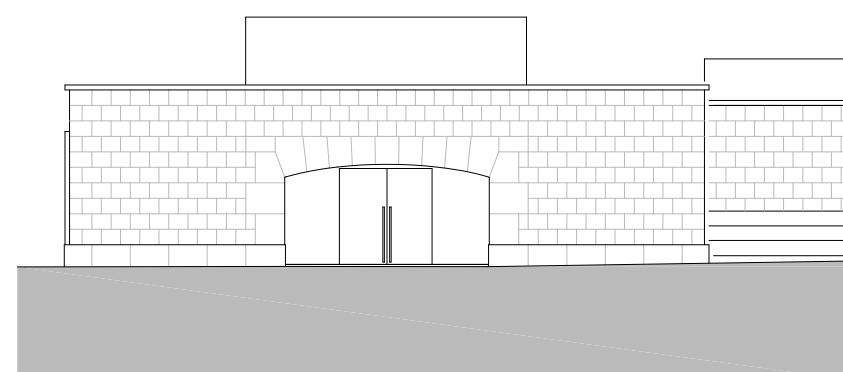
Ansicht Süd



Ansicht Nord



Ansicht West



Ansicht Ost